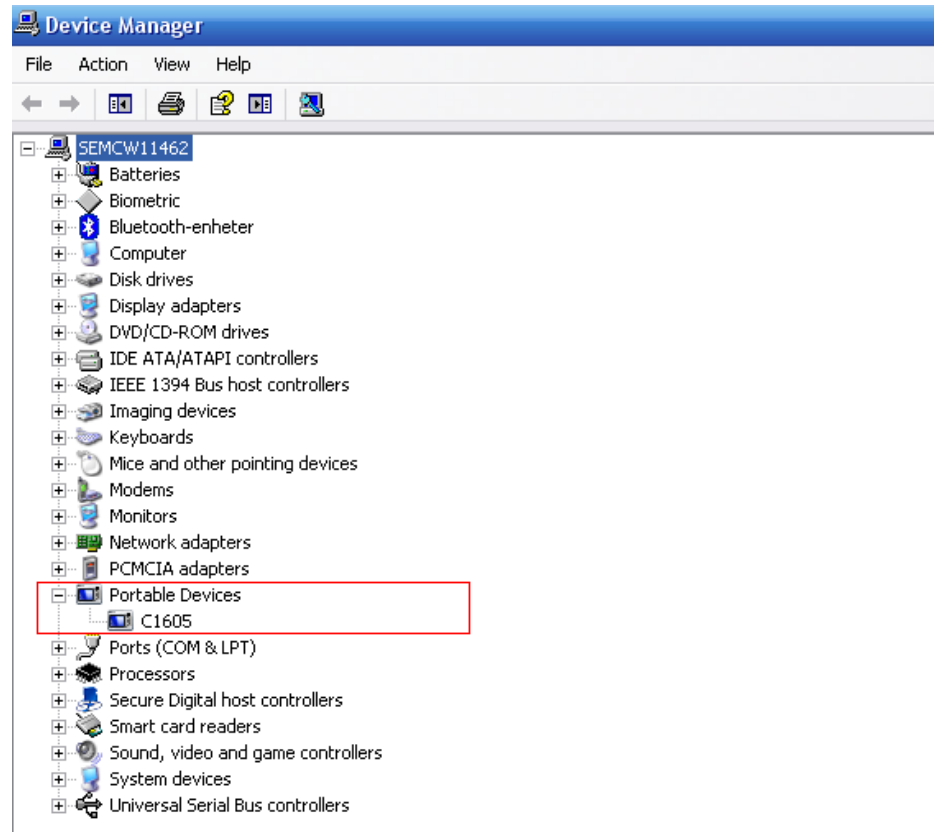


USB Driver Installation guide for C15 and C16

Install USB Driver on XP.

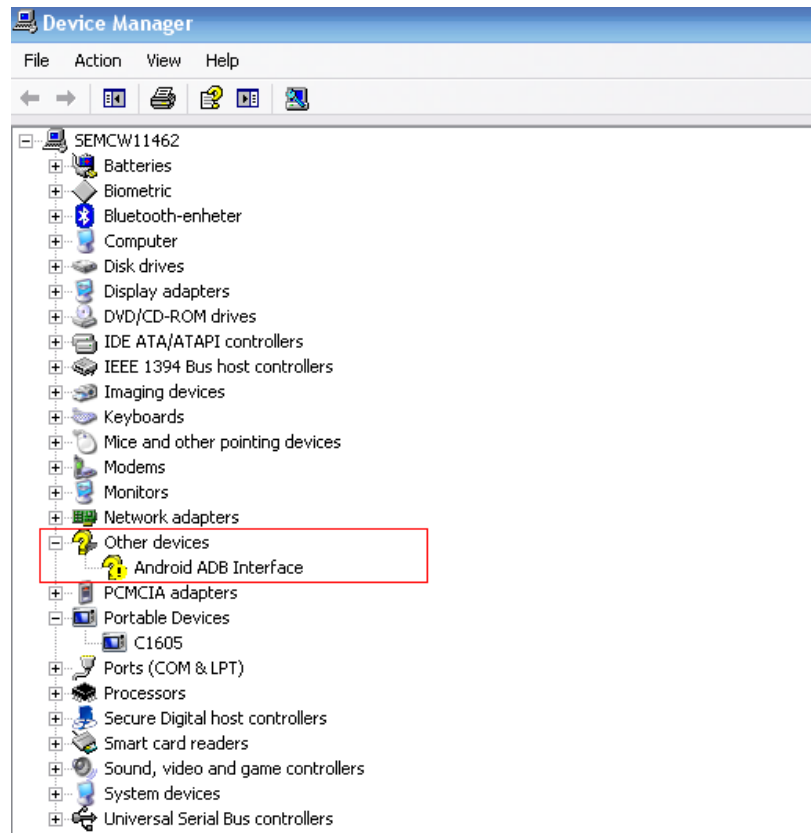
MTP Driver XP

- After connect your PC, MTP driver should be install automatically.



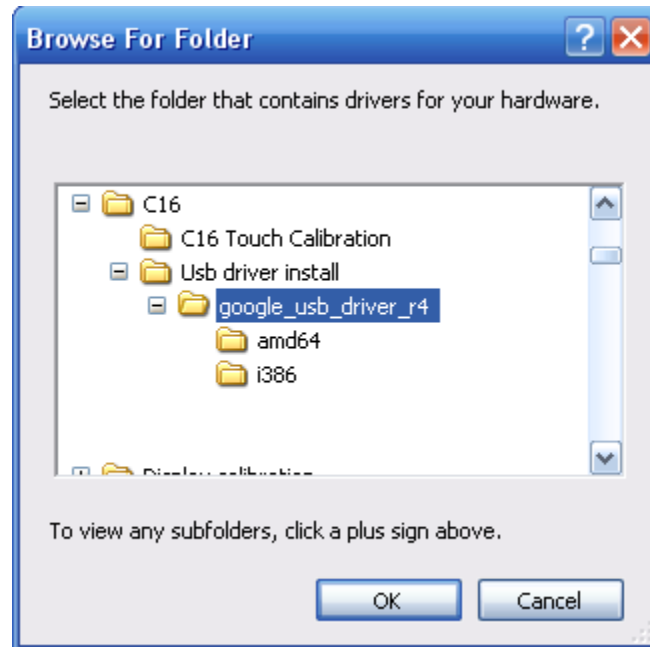
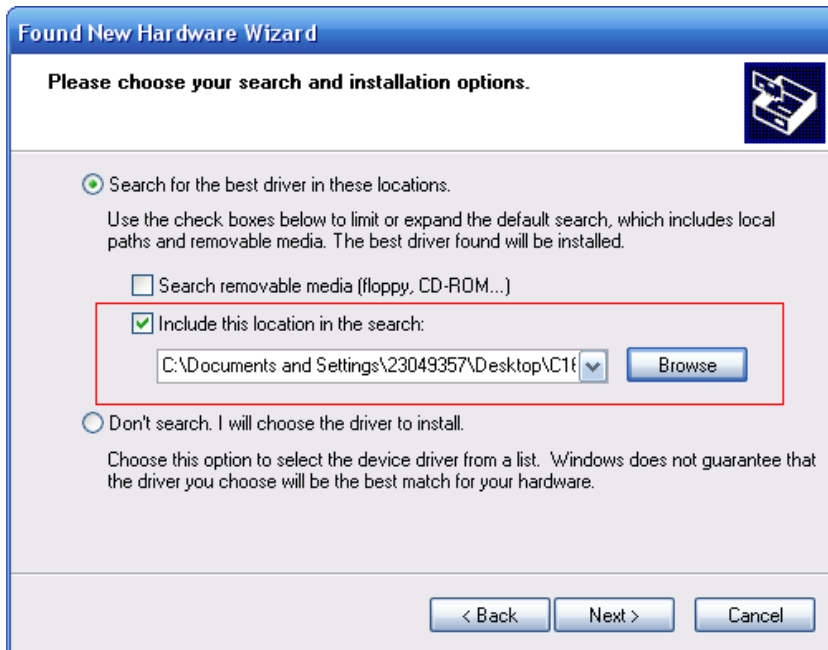
ADB driver XP.

- You will find another devices named “Android ADB Interface”



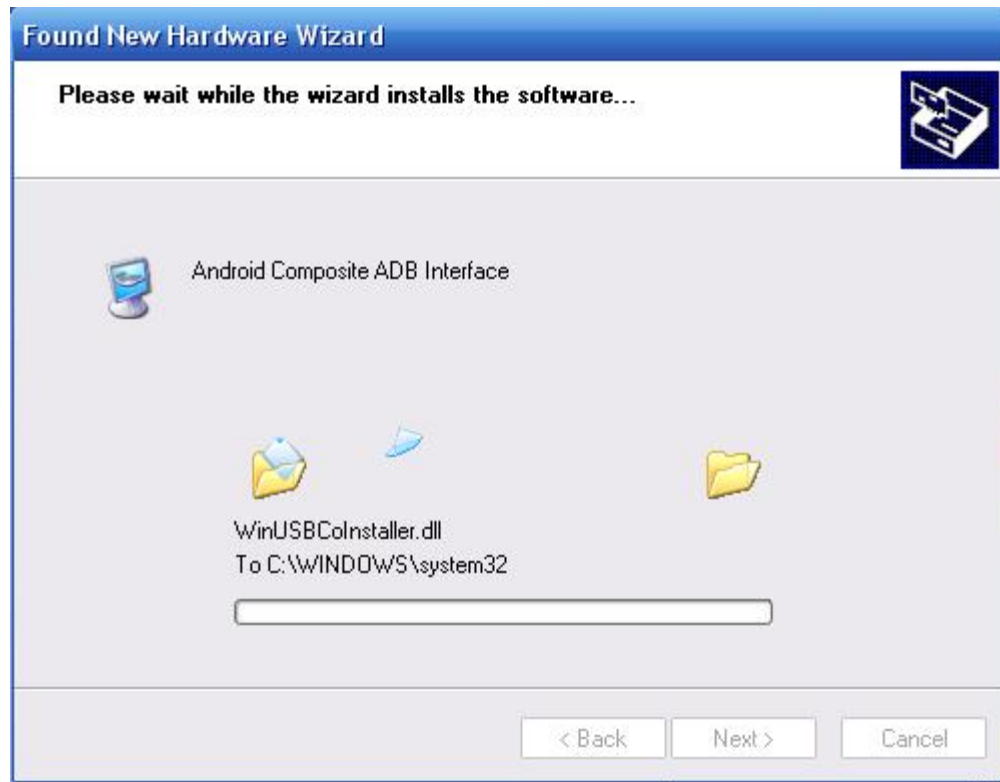
ADB driver XP.

- Then install the driver step by step manually



ADB driver XP.

- Please wait while the wizard installs the software



ADB driver XP.

- After install successfully, you can find ADB as below in device manager

